



LATITUDE

3340/3440/3540

Modern design with up-leveled essential productivity features for every business.



3340/3440/3540

Modern design with up-leveled essential productivity features for every business.

A broad range of essential features built for any business and any budget, and perfectly suited for the mobile professional who works from anywhere.



Ideal for task-oriented professionals, educators, and students performing advanced curriculum who are driven to produce results and strive for efficiency. They need enterprise-level security, essential intelligence and collaboration features that help them stay productive.

World's Lightest New 13" Essential Business Laptop:¹⁴
Starts at 2.76lbs/1.25kg

Upgraded Audio
Experience improved audio quality for better collaboration on 14"/15".

Optional FHD IR Camera
Collaborate more confidently and sign-in securely with Windows Hello.

All new modern, design
Re-designed chassis featuring a new color and texture on 14"/15".

Optimal versatility
13" 2-in-1 features an optional Active Touch panel with pen support.



Privacy Control
Mechanical Privacy Camera Shutter.

Up-leveled Performance
13th Generation Intel® Core™ Processors up to i7. Offering a vast array of memory options with the new, fast LPDDR5 memory on 13", DDR4 memory on 14"/15", and discrete graphics card options on 14"/15".

New enhanced keyboard
Improved backlit* keyboard with durable, laser-etched key prints, and longer key travel for increased comfort.



4G, Wi-Fi 6 & Wi-Fi 6E²⁰ connections
Wi-Fi 6E allows 7 more channels for more bandwidth which provides faster, smoother Wi-Fi, especially in high-density areas while 4G LTE options keep you connected wherever you work.

Upgraded clickpad
Work comfortably on the new clickpad featuring improved feel for better productivity.

ExpressResponse
Launch applications faster and improve overall app performance.

Intelligent Audio with Neural Noise Cancellation
Collaborate confidently with AI-based background noise elimination.

ExpressConnect
Utilize 2 or more networks at once with ExpressConnect, the world's 1st simultaneous multi-network connection for faster data and video downloads.

Outstanding run-time plus faster charging with ExpressCharge
Multiple battery options up to 54Whr, and rapid reload up to 80% in 75 minutes.

Sustainable design
Our most sustainable Latitude 3000 series yet, featuring components made with post-consumer recycled plastics.



Uses 100% recycled and renewable packaging²¹, including multipack options.

*Backlit keyboard is optional.

3000

Sustainability on Dell Latitude 3000 series

Delivering innovative technology and solutions to reduce our environmental impact, for ourselves and our customers.

Sustainable Materials

Our use of sustainable materials helps reduce the environmental impact of making and recycling them.*



Latitude 3340 and Latitude 3340 2-in-1:
50% recycled plastics in bezel, battery housing and AC adapter exterior (upsell only), 30% recycled plastics in the lids and bottom door

Latitude 3440 and Latitude 3540
50% recycled plastics in bezel, bottom door, battery housing and AC adapter exterior (upsell only), 30% recycled plastics in the palm rest

Packaging Innovation

Ships in new enhanced **100% recycled or renewable packaging that is also 100% recyclable.***** Multipack shipping available on eligible products.



Ecolabels

Eco-labeling standards drive sustainability further by helping customers understand electronic products and the companies that make them. This product meets the following standards:



Recycle

Securely and responsibly retire your IT equipment with Dell regardless of brand, in support of a circular economy. Learn more at Dell.com/Recycle

See how we are reducing the impact of our products and solutions
Dell.com/Sustainable-Devices

3340/3440/3540

Dell Optimizer

We make it intelligent. You make it yours.

In a work-from-anywhere world, powering the world's most intelligent commercial PCs¹⁸ is not enough, Dell Optimizer is extending personalized intelligence to the rest of the Dell ecosystem.

Dell Optimizer lets you accomplish anything with built-in intelligence that learns and adapts to the way you work.



Elevate everyday work with personalized performance extending from your Latitude to the devices within your workspace.



An intelligent ecosystem

Enjoy easy pairing and management of your Dell monitors and accessories with the **integration of Dell Display Manager and Dell Peripheral Manager**.



Unmatched connectivity

ExpressConnect provides the world's first simultaneous multinet network connection¹⁹ that joins the best network available.



Improved app performance

ExpressResponse analyzes how you use your preferred apps to boost performance.



Up level audio

Intelligent Audio delivers sound and mic enhancements reducing background noise using neural noise cancellation and voice isolation technology.



Extended power

ExpressCharge analyzes your power usage habits to improve PC battery utilization and extends run times by charging your system faster when you need a boost in power.

With Dell Optimizer, optimization and data collection follow a stringent process to ensure your privacy and security.

[Click here to learn more about Dell Optimizer.](#)

3340/3440/3540

Make yourself more resilient to cyberattacks with Dell Trusted Devices.

Attacks are inevitable. In fact, 69% of organizations report a cyber-attack due to a poorly managed internet-facing asset in the prior 12 months.* Dell Technologies understands that today's security challenges include managing an evolving threat landscape with a modern work environment in mind. With Dell commercial devices, catch and repel malicious activity before it compromises your system. Latitude, one of the industry's most secure commercial PCs**, offers layers of security features to keep you protected and give you visibility to threats for swift action.



Secure anywhere-work with hardware and firmware defenses built for our hyper-distributed world.



Stay protected from evolving threats

Our unique BIOS and firmware verification provides greater security than other PCs. Assess a corrupt BIOS, repair it and gain insights that reduce exposure to future threats.



Spot ticking timebombs

Indicators of Attack, an early-alert feature offered only by Dell, scans for behavior-based threats before they can do damage.



Detect chassis tampering

Detect unauthorized access, e.g., malicious implanted hardware or software, data/component theft inside system chassis.



Secure end user credentials

SafelD, a dedicated FIPS Level 2 certified security chip, keeps user credentials hidden from malware.



Be safe from first boot

Rigorous, state-of-the-art supply chain controls reduce the risk of product tampering. Optional additions like the Dell-unique Secured Component Verification provide additional assurance of device integrity.

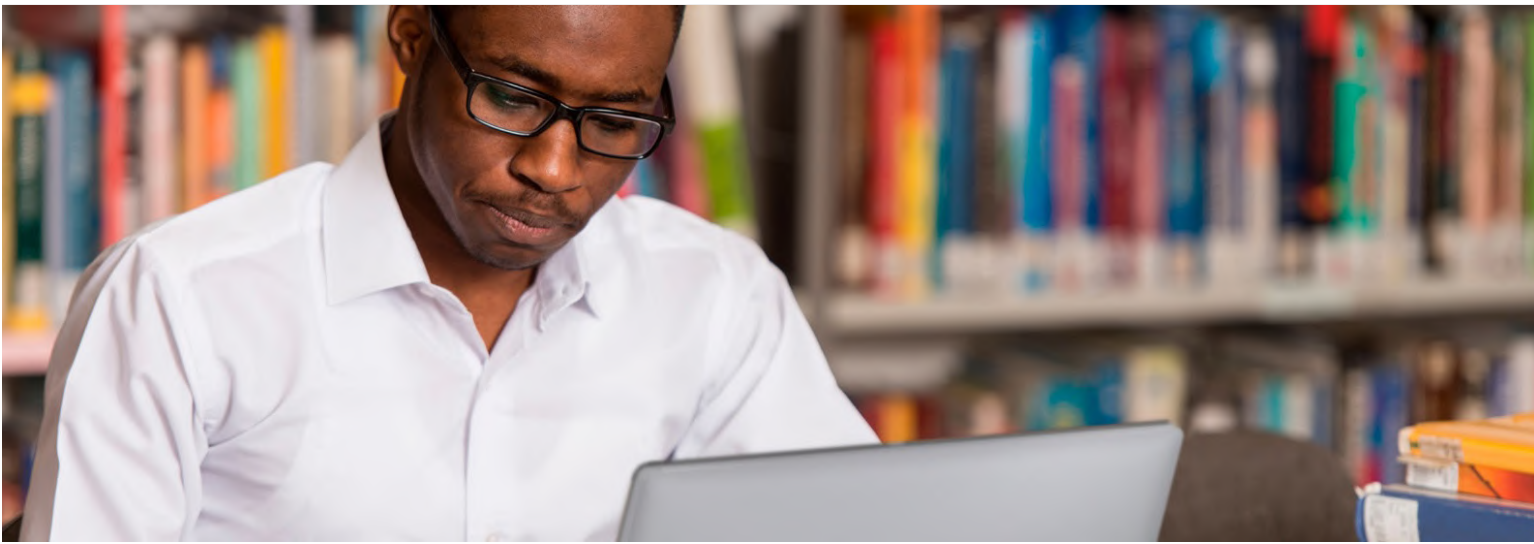


Protect data everywhere

Stay protected against advanced threats with optional software-based protections from our ecosystem of best-of-breed partners (CrowdStrike, VMware Carbon Black, Secureworks, Netskope and Absolute).

*ESG Survey: Security, Hygiene and Posture Management, Jan. 2022

**Dell internal analysis, September 2022. Not all features available with all PCs. Additional purchase required for some features



RECOMMENDED SOLUTIONS

HOME



Dell 24 USB-C Hub Monitor - P2422HE

Stay productive, no matter where you work. Reduce harmful blue light with this sleek 23.8-inch FHD hub monitor with ComfortView Plus.



Dell Pro Webcam - WB5023

Experience industry leading video quality and picture clarity in any lighting with this intelligent 2K QHD webcam.



Dell Dual Dock - HD22Q

Powerfully productive, this compact dock is the world's first laptop docking station with a wireless charging stand for Qi-enabled smartphone or earbuds.



Dell Pro Wireless Headset - WL5022

Enjoy wireless freedom with this Teams certified headset with Bluetooth. Switch seamlessly to your PC or smartphone and enjoy crystal clear audio on the go.

OFFICE



Dell 24 Video Conferencing Monitor - C2423H

Stay in sync on a 24-inch FHD monitor with built-in conferencing essentials, low blue light and an eco-friendly design.



Dell Pro Wireless Keyboard and Mouse - KM5221W

Enhance your everyday productivity with a quiet full-size keyboard and mouse combo that offers programmable shortcuts and 36 months battery life.



Dell USB-C Dock - WD19S 130W

Boost your PC's power up to 90W with ExpressCharge on the world's most powerful and first modular USB-C dock with a future-ready design.^{16,17}



Dell Speakerphone - SP3022

Experience rich, clear sound with the world's most intelligent Microsoft Teams-certified speakerphone.¹⁵

3340/3440/3540

FEATURE TECHNICAL SPECIFICATION

MODEL NUMBER ¹	Latitude 3340 (Laptop or 2-in-1)	Latitude 3440	Latitude 3540
PROCESSOR OPTIONS¹	13th Gen Intel® Core™ processors up to i7, U15 12th Gen Intel® Core™ i3 processor, U15	13th Gen Intel® Core™ processors up to i7, U15 12th Gen Intel® Celeron® and Core™ i3 processors, U15	13th Gen Intel® Core™ processors up to i7, U15 12th Gen Intel® Celeron® and Core™ i3 processors, U15
OPERATING SYSTEM¹	Microsoft® Windows 10 Pro 64-bit (11 License) Microsoft® Windows 11 Home 64-bit Microsoft® Windows 11 Pro 64-bit Ubuntu® 22.04 LTS, 64-bit (Laptop only)	Microsoft® Windows 10 Pro 64-bit (11 License) Microsoft® Windows 11 Home 64-bit Microsoft® Windows 11 Pro 64-bit Ubuntu® 22.04 LTS, 64-bit	Microsoft® Windows 10 Pro 64-bit (11 License) Microsoft® Windows 11 Home 64-bit Microsoft® Windows 11 Pro 64-bit Ubuntu® 22.04 LTS, 64-bit
MEMORY OPTIONS^{1,2,3}	Up to 16 GB LPDDR5 4800 MHz (on board) Up to 16 GB LPDDR5x 4800MHz (on board), (coming soon)	Up to 64 GB DDR4 3200 MHz (socketed)	Up to 64 GB DDR4 3200 MHz (socketed)
CHIPSET¹	Integrated with the processor	Integrated with the processor	Integrated with the processor
INTEL RESPONSIVENESS TECHNOLOGIES^{1, 6}	Intel® Rapid Storage Technology	Intel® Rapid Storage Technology	Intel® Rapid Storage Technology
GRAPHICS^{1,12}	Integrated: Intel® Iris® Xe Graphics with Intel® Core™ i5/i7 processors Intel® UHD Graphics with Intel® Core™ i3 processors	Integrated: Intel® Iris® Xe Graphics with Intel® Core™ i5/i7 processors and dual-channel memory configuration Intel® UHD Graphics with Intel® Celeron® and Core™ i3 processors or single channel memory Discrete: NVIDIA® GeForce® MX550, 2 GB GDDR6	Integrated: Intel® Iris® Xe Graphics with Intel® Core™ i5/i7 processors and dual-channel memory configuration Intel® UHD Graphics with Intel® Celeron® and Core™ i3 processors or single channel memory Discrete: NVIDIA® GeForce® MX550, 2 GB GDDR6
DISPLAY¹	Laptop 13.3" 16:9 FHD (1920 x 1080), WVA/IPS, Non-Touch, Anti-Glare, 250 nit, NTSC 45% 2-in-1 13.3" 16:9 FHD (1920 x 1080), WVA/IPS, Touch, Anti-Glare, 250 nit, NTSC 45% 13.3" 16:9 FHD (1920 x 1080), WVA/IPS, Touch, Anti-Reflective, Anti-Glare, Anti-Smudge, 300 nit, NTSC 72%, Corning® Gorilla Glass®, Active Pen Support	14" 16:9 HD (1366 x 768), TN, Non-Touch, Anti-Glare, 220 nit, NTSC 45% 14" 16:9 FHD (1920 x 1080), WVA/IPS, Non-Touch, Anti-Glare, 250 nit, NTSC 45% 14" 16:9 FHD (1920 x 1080), WVA/IPS, Touch, Anti-Glare, 300 nit, NTSC 72%	15.6" 16:9 HD (1366 x 768), TN, Non-Touch, Anti-Glare, 220 nit, NTSC 45%, 15.6" 16:9 FHD (1920 x 1080), WVA/IPS, Non-Touch, Anti-Glare, 250 nit, NTSC 45% 15.6" 16:9 FHD (1920 x 1080), WVA/IPS, Touch, Anti-Glare, 250 nits NTSC 45%
STORAGE OPTIONS^{1, 3}	Up to 1TB, M.2 2230 PCIe NVMe, SSD, Class 35 Up to 1TB, M.2 2280 PCIe NVMe, SSD, Class 40	Up to 1 TB, M.2 2230, PCIe NVMe, SSD, Class 35 Up to 1 TB, M.2 2280, PCIe NVMe, SSD, Class 40	Up to 1 TB, M.2 2230, PCIe NVMe, SSD, Class 35 Up to 1 TB, M.2 2280, PCIe NVMe, SSD, Class 40
SECURITY¹	TPM 2.0 FIPS-140-2 Certified / TCG Certified Optional fingerprint reader in power button (Windows Hello compliant) Optional Face IR camera (Windows Hello compliant) Network based Contextual Privacy Camera Shutter Chassis Intrusion Detection Dell SafeBIOS Dell SafeID Dell Client Command Suite Factory Installed Dell Command Update Dell Performance Dell SupportAssist for home PCs Dell Trusted Devices Additional Software Security Features Netskope™ Cloud Access Security Broker (CASB) Netskope™ Secure Web Gateway Netskope™ Zero Trust Private Access Vmware® Carbon Black Endpoint Standard Vmware® Carbon Black Endpoint Standard + Secureworks® Taegis™ XDR Bundle Vmware® Carbon Black Endpoint Advanced Vmware® Carbon Black Endpoint Enterprise Secureworks® Taegis™ XDR VMware® Workspace ONE Standard VMware® Workspace ONE Advanced VMware® Workspace ONE Enterprise Absolute® Endpoint - Visibility Absolute® Endpoint - Control Absolute® Endpoint - Resilience	TPM 2.0 FIPS-140-2 Certified / TCG Certified Optional fingerprint reader in power button (Windows Hello compliant) Optional Face IR camera (Windows Hello compliant) Network based Contextual Privacy Camera Shutter Chassis Intrusion Detection Dell SafeBIOS Dell SafeID Dell Client Command Suite Factory Installed Dell Command Update Dell Performance Dell SupportAssist for home PCs Dell Trusted Devices Additional Software Security Features Netskope™ Cloud Access Security Broker (CASB) Netskope™ Secure Web Gateway Netskope™ Zero Trust Private Access Vmware® Carbon Black Endpoint Standard Vmware® Carbon Black Endpoint Standard + Secureworks® Taegis™ XDR Bundle Vmware® Carbon Black Endpoint Advanced Vmware® Carbon Black Endpoint Enterprise Secureworks® Taegis™ XDR VMware® Workspace ONE Standard VMware® Workspace ONE Advanced VMware® Workspace ONE Enterprise Absolute® Endpoint - Visibility Absolute® Endpoint - Control Absolute® Endpoint - Resilience	TPM 2.0 FIPS-140-2 Certified / TCG Certified Optional fingerprint reader in power button (Windows Hello compliant) Optional Face IR camera (Windows Hello compliant) Network based Contextual Privacy Camera Shutter Chassis Intrusion Detection Dell SafeBIOS Dell SafeID Dell Client Command Suite Factory Installed Dell Command Update Dell Performance Dell SupportAssist for home PCs Dell Trusted Devices Additional Software Security Features Netskope™ Cloud Access Security Broker (CASB) Netskope™ Secure Web Gateway Netskope™ Zero Trust Private Access Vmware® Carbon Black Endpoint Standard Vmware® Carbon Black Endpoint Standard + Secureworks® Taegis™ XDR Bundle Vmware® Carbon Black Endpoint Advanced Vmware® Carbon Black Endpoint Enterprise Secureworks® Taegis™ XDR VMware® Workspace ONE Standard VMware® Workspace ONE Advanced VMware® Workspace ONE Enterprise Absolute® Endpoint - Visibility Absolute® Endpoint - Control Absolute® Endpoint - Resilience
DOCKING¹	(Docks are optional, sold separately) Dell Thunderbolt™ Dock - WD22TB4 Dell Performance Dock - WD19DCS Dell USB-C Dock - WD19S Dell Universal Dock - UD22 Dell Dual Charge Dock - HD22Q	(Docks are optional, sold separately) Dell Thunderbolt™ Dock - WD22TB4 Dell Performance Dock - WD19DCS Dell USB-C Dock - WD19S Dell Universal Dock - UD22 Dell Dual Charge Dock - HD22Q	(Docks are optional, sold separately) Dell Thunderbolt™ Dock - WD22TB4 Dell Performance Dock - WD19DCS Dell USB-C Dock - WD19S Dell Universal Dock - UD22 Dell Dual Charge Dock - HD22Q

3340/3440/3540

FEATURE TECHNICAL SPECIFICATION

<p>MULTIMEDIA¹</p>	<p>FHD+IR Camera (2-in-1 only) Experience: Temporal Noise Reduction (TNR) + Camera Shutter</p> <p>FHD RGB Camera (Laptop or 2-in-1) Experience: Temporal Noise Reduction (TNR) + Camera Shutter</p> <p>HD RGB Camera (Laptop only) Experience: Temporal Noise Reduction (TNR) + Camera Shutter</p> <p>2 x Speakers, Waves MaxxAudio Pro 2 x Noise Canceling Microphones Intelligent Audio with Neural Noise Cancellation Universal Audio Jack™</p>	<p>FHD+IR Camera Experience: Temporal Noise Reduction (TNR) + Camera Shutter</p> <p>FHD RGB Camera Experience: Temporal Noise Reduction (TNR) + Camera Shutter</p> <p>HD RGB Camera Experience: Temporal Noise Reduction (TNR) + Camera Shutter</p> <p>2 x Speakers, Waves MaxxAudio Pro 2 x Noise Canceling Microphones Intelligent Audio with Neural Noise Cancellation Universal Audio Jack</p>	<p>FHD+IR Camera Experience: Temporal Noise Reduction (TNR) + Camera Shutter</p> <p>FHD RGB Camera Experience: Temporal Noise Reduction (TNR) + Camera Shutter</p> <p>HD RGB Camera Experience: Temporal Noise Reduction (TNR) + Camera Shutter</p> <p>2 x Speakers, Waves MaxxAudio Pro 2 x Noise Canceling Microphones Intelligent Audio with Neural Noise Cancellation Universal Audio Jack</p>
<p>BATTERY OPTIONS^{1,5}</p>	<p>3-cell, 42 Wh, Li-ion, ExpressCharge 1.0™ Capable 3-cell, 54 Wh, Li-ion, ExpressCharge 1.0™ Capable 3-cell, 42 Wh, Li-ion, Long Life Cycle, ExpressCharge 1.0™ Capable 3-cell, 54 Wh, Li-ion, Long Life Cycle, ExpressCharge 1.0™ Capable</p>	<p>3-cell, 42 Wh, Li-ion, ExpressCharge 1.0™ Capable 3-cell, 54 Wh, Li-ion, ExpressCharge 1.0™ Capable 3-cell, 42 Wh, Li-ion, Long Life Cycle, ExpressCharge 1.0™ Capable 3-cell, 54 Wh, Li-ion, Long Life Cycle, ExpressCharge 1.0™ Capable</p>	<p>3-cell, 42 Wh, Li-ion, ExpressCharge 1.0™ Capable 3-cell, 54 Wh, Li-ion, ExpressCharge 1.0™ Capable 3-cell, 42 Wh, Li-ion, Long Life Cycle, ExpressCharge 1.0™ Capable 3-cell, 54 Wh, Li-ion, Long Life Cycle, ExpressCharge 1.0™ Capable</p>
<p>POWER OPTIONS¹</p>	<p>65W adapter, Type-C 65W adapter, 4.5mm barrel 60W adapter, Type-C, Ultralight Mini Adapter (Japan only)</p>	<p>65W adapter, Type-C 65W adapter, 4.5mm barrel 60W adapter, Type-C, Ultralight Mini Adapter (Japan only)</p>	<p>65W adapter, Type-C 65W adapter, 4.5mm barrel 60W adapter, Type-C, Ultralight Mini Adapter (Japan only)</p>
<p>CONNECTIVITY OPTIONS¹</p>	<p>Microsoft Modern Standby compliant Wireless LAN Options²: Realtek Wi-Fi 6 RTL8852BE, 2x2, Bluetooth²² Intel® Wi-Fi 6E (6GHz) AX211, 2x2, Bluetooth²²</p>	<p>Microsoft Modern Standby compliant Wireless LAN Options²: Realtek Wi-Fi 6 RTL8852BE, 2x2, Bluetooth²² Intel® Wi-Fi 6E (6GHz) AX211, 2x2, Bluetooth²² Mobile Broadband Options⁹: Intel® XMM™ 7560R+ Global LTE-Advanced Cat 16 WWAN (DW5823e), (eSIM capable) Intel® XMM™ 7560R+ LTE-Advanced Cat 16 WWAN (DW5823e) China, Turkey Intel® XMM™ 7560R+ LTE-Advanced Cat 16 WWAN (DW5823e), eSIM, AT&T, Verizon, T-Mobile, US only</p>	<p>Microsoft Modern Standby compliant Wireless LAN Options²: Realtek Wi-Fi 6 RTL8852BE, 2x2, Bluetooth²² Intel® Wi-Fi 6E (6GHz) AX211, 2x2, Bluetooth²² Mobile Broadband Options⁹: Intel® XMM™ 7560R+ Global LTE-Advanced Cat 16 WWAN (DW5823e), (eSIM capable) Intel® XMM™ 7560R+ LTE-Advanced Cat 16 WWAN (DW5823e) China, Turkey Intel® XMM™ 7560R+ LTE-Advanced Cat 16 WWAN (DW5823e), eSIM, AT&T, Verizon, T-Mobile, US only</p>
<p>PORTS, SLOTS & CHASSIS¹</p>	<p>1x USB Type-C 3.2 Gen2 with Power Delivery & DisplayPort 1.4 2x USB 3.2 Gen1 (1x with PowerShare) 1x HDMI 1.4 1x Optional Touch Fingerprint Reader in Power Button 1x Universal Audio Jack 1x barrel power adapter port Wedge Shaped Lock Slot</p>	<p>1x USB Type-C 3.2 Gen2 with Power Delivery & DisplayPort 1.4 3x USB 3.2 Gen1 (1x with PowerShare) 1x HDMI 1.4 1x RJ-45 Ethernet port 1x Optional external uSIM card tray (WWAN only) 1x Optional Touch Fingerprint Reader in Power Button 1x Universal Audio Jack 1x barrel power adapter port Wedge Shaped Lock Slot</p>	<p>1x USB Type-C 3.2 Gen2 with Power Delivery & DisplayPort 1.4 3x USB 3.2 Gen1 (1x with PowerShare) 1x HDMI 1.4 1x RJ-45 Ethernet port 1x Optional external uSIM card tray (WWAN only) 1x Optional Touch Fingerprint Reader in Power Button 1x Universal Audio Jack 1x barrel power adapter port Wedge Shaped Lock Slot</p>
<p>TOUCHPAD</p>	<p>Precision Clickpad with multi-touch gesture support</p>	<p>Precision Clickpad with multi-touch gesture support</p>	<p>Precision Clickpad with multi-touch gesture support</p>
<p>DIMENSIONS & WEIGHT^{1,13}</p>	<p>Width: 306.0mm / 12.0in Depth: 210.9mm / 8.3in Height (front): 16.8mm / 0.66in Height (rear): 18.6mm / 0.73in Laptop, 18.7mm / 0.74in 2-in-1 Screen to Body Ratio: 82.3% Laptop, 82.8% 2-in-1 Laptop Starting weight: 1.25kg / 2.76lbs 2-in-1 Starting weight: 1.35kg / 2.98lbs</p>	<p>Width: 322.2mm / 12.7in Depth: 219.4mm / 8.6in Height (front): 17.7mm / 0.70in Height (rear): 19.4mm / 0.76in Screen to Body Ratio: 84.5% Starting weight: 1.54kg / 3.40lbs</p>	<p>Width: 359.0mm / 14.1in Depth: 239.7mm / 9.4in Height (front): 18.1mm / 0.71in Height (rear): 20.4mm / 0.80in Screen to Body Ratio: 85.3% Starting weight: 1.81kg / 3.99lbs</p>
<p>REGULATORY AND ENVIRONMENTAL COMPLIANCE¹</p>	<p>Laptop: Regulatory Model: P167G; Regulatory Type: P167G001 2-in-1: Regulatory Model: P168G; Regulatory Type: P168G001 ENERGY STAR EPEAT Registered. For specific country participation and rating, please see www.epeat.net TCO compliant configurations available Halogen-Free/ Arsenic-Free BFR/PVC free⁸</p>	<p>Regulatory Model: P169G; Regulatory Type: P169G001 ENERGY STAR EPEAT Registered. For specific country participation and rating, please see www.epeat.net TCO compliant configurations available Halogen-Free/ Arsenic-Free BFR/PVC free⁸</p>	<p>Regulatory Model: P170G; Regulatory Type: P170G001 ENERGY STAR EPEAT Registered. For specific country participation and rating, please see www.epeat.net TCO compliant configurations available Halogen-Free/ Arsenic-Free BFR/PVC free⁸</p>

3340/3440/3540

FEATURE TECHNICAL SPECIFICATION

INPUT¹	Optional 10-Finger Touch Display Microsoft® Precision Clickpad Spill Resistant Non-Backlit Keyboard Spill Resistant Backlit Keyboard Dell Premier Rechargeable Active Pen - PN7522W (optional, sold separately, 2-in-1 only) Dell Active Pen - PN5122W (optional, sold separately, 2-in-1 only)	Optional 10-Finger Touch Display Microsoft® Precision Clickpad Spill Resistant Non-Backlit Keyboard Spill Resistant Backlit Keyboard	Optional 10-Finger Touch Display Microsoft® Precision Clickpad Spill Resistant Non-Backlit Keyboard Spill Resistant Backlit Keyboard
SENSORS¹	Gyroscope (2-in-1 only) eCompass/Magnetometer (2-in-1 only) Accelerometer (2-in-1 only) Wake/Power on with lid open	GPS (via WWAN Card only) Adaptive Thermal Performance (Discrete graphics only) Wake/Power on with lid open	GPS (via WWAN Card only) Adaptive Thermal Performance (Discrete graphics only) Wake/Power on with lid open
SYSTEMS MANAGEMENT¹	Dell Client Command Suite available (dell.com/command), Factory Installed Dell Client Command Update, Dell Command Power Manager Dell Optimizer	Dell Client Command Suite available (dell.com/command), Factory Installed Dell Client Command Update, Dell Command Power Manager Dell Optimizer	Dell Client Command Suite available (dell.com/command), Factory Installed Dell Client Command Update, Dell Command Power Manager Dell Optimizer
WARRANTY AND SERVICE¹	Limited Hardware Warranty ⁴ , Standard 1 year Mail-in Service after Remote Diagnosis ¹⁰ , optional 3, 4 and 5 year hardware warranty extensions, and 3-5 year Dell ProSupport contracts available ¹¹	Limited Hardware Warranty ⁴ , Standard 1 year Mail-in Service after Remote Diagnosis ¹⁰ , optional 3, 4 and 5 year hardware warranty extensions, and 3-5 year Dell ProSupport contracts available ¹¹	Limited Hardware Warranty ⁴ , Standard 1 year Mail-in Service after Remote Diagnosis ¹⁰ , optional 3, 4 and 5 year hardware warranty extensions, and 3-5 year Dell ProSupport contracts available ¹¹
PERIPHERAL ECOSYSTEM¹	Powerful accessories designed and tested for Latitude 3340 enable seamless productivity to work from anywhere.	Powerful accessories designed and tested for Latitude 3440 enable seamless productivity to work from anywhere.	Powerful accessories designed and tested for Latitude 3540 enable seamless productivity to work from anywhere.
SUSTAINABILITY	30% post-consumer recycled (PCR) plastic in lid/top cover 50% PCR plastic in LCD bezel 30% PCR plastic in bottom cover 50% PCR plastic in battery frame 50% PCR plastic in 65W Type-C adapter 30% PCR plastic in 60W Type-C adapter (Japan only) Packaging made from 100% recycled or renewable materials	30% PCR plastic in palmrest 50% PCR plastic in LCD bezel 50% PCR plastic in bottom cover 50% PCR plastic in battery frame 50% PCR plastic in 65W Type-C adapter 30% PCR plastic in 60W Type-C adapter (Japan only) Packaging made from 100% recycled or renewable materials	30% PCR plastic in palmrest 50% PCR plastic in LCD bezel 50% PCR plastic in bottom cover 50% PCR plastic in battery frame 50% PCR plastic in 65W Type-C adapter 30% PCR plastic in 60W Type-C adapter (Japan only) Packaging made from 100% recycled or renewable materials

Product Disclosures:

- 1 Offering may vary by country and by configuration and operating system.
- 2 System with single channel memory is shown as Intel UHD graphics. System with dual channel memory is shown as Intel Iris Xe Graphics.
- 3 GB means 1 billion bytes and TB equals 1 trillion bytes; actual capacity varies with preloaded material and operating environment and will be less.
- 4 Limited Hardware Warranty: For copy of Limited Hardware Warranty, write Dell USA LP, Attn: Warranties, One Dell Way, Round Rock, TX 78682 or see www.dell.com/warranty.
- 5 The stated Watt Hour (Whr) is not an indication of battery life.
- 6 Intel Rapid Storage Technology requires a HDD, mSATA, or an SSD, as primary storage device and Windows OS required
- 7 Wireless module available only at time of system purchase. Wi-Fi6e (supporting 6GHz spectrum) requires Windows 11 Operating system and compatible router. Router requires a separate purchase. Wi-Fi 6E connectivity is only available in selected locations. Check availability with your service provider.
- 8 Dell Latitude 3340, 3440, 3540 are brominated flame retardant free (BFR-free) and polyvinyl chloride free (PVC-free); meeting the definition of BFR-/PVC-free as set forth in the INEMI Position Statement on the 'Definition of Low-Halogen Electronics (BFR-/CFR-/PVC-free)'. Plastic parts contain less than 1,000 ppm (0.1%) of bromine (if the Br source is from BFRs) and less than 1,000 ppm (0.1%) of chlorine (if the Cl source is from CFRs or PVC or PVC copolymers). All printed circuit board (PCB) and substrate laminates contain bromine/chlorine total less than 1,500 ppm (0.15%) with a maximum chlorine of 900 ppm (0.09%) and maximum bromine being 900 ppm (0.09%).
- 9 Mobile Broadband antenna and module available only at time of system purchase. Mobile Broadband subject to service provider's broadband subscription and coverage area; additional charges apply. eSim technology subject to regional carrier/service provider availability & service provider's data plan subscription; additional charges apply. Check availability with your service provider.
- 10 Mail-in Service after Remote Diagnosis: Remote Diagnosis is determination by online/phone technician of cause of issue; may involve customer access to inside of system and multiple or extended sessions. If issue is covered by Limited Hardware Warranty (www.dell.com/warranty) and not resolved remotely, technician and/or part will be dispatched, usually within 1 business day following completion of Remote Diagnosis. Availability varies. Other conditions apply.
- 11 Dell Services: Availability and terms of Dell Services vary by region. For more information, visit www.dell.com/servicesdescriptions.
- 12 GB means 1 billion bytes and TB equals 1 trillion bytes; significant system memory may be used to support graphics, depending on system memory size and other factors.
- 13 Weights vary depending on configuration and manufacturing variability.
- 14 Based on Dell Internal Analysis, November 2022.
- 15 Based on Dell analysis comparing against competitive personal conferencing speakerphones, September 2021.
- 16 Based on Dell Internal analysis, February 2019.
- 17 Based on Dell Internal analysis of competitive products using publicly available data as of February 2019. Power Delivery of up to 130W when used with compatible Dell system. Expresscharge Boost is available on select Dell systems.
- 18 Based on Dell analysis, October 2022. Dell Optimizer not available in OptiPlex 3000 series, Latitude Chromebook Enterprise, and Linux-based devices. Feature availability and functionality may vary by model. For more details visit: <https://www.delltechnologies.com/asset/en-us/solutions/business-solutions/technical-support/dell-optimizer-features-availability-matrix.pdf>.external
- 19 Simultaneous multi-network connection (or Connection based teaming) is a new connectivity feature under ExpressConnect. It simultaneously sends and receives data and video traffic using two or more wired or wireless connections. Simultaneous multi-network connection works with wired and wireless networks. For select Dell platforms, a USB Wi-Fi adapter is required to connect a second Wi-Fi network. Based on Dell internal analysis, September 2021.
- 20 Wi-Fi 6E compatible router required. Router requires separate purchase. Wi-Fi 6E connectivity only available in select countries. Check availability with your service provider.
- 21 New packaging is made with up to 94.8% recycled content and up to 64.4% renewable content in the form of renewable paper fibers. Material makeup varies by product and size. Excludes optional items added to order and included in box. Paper packaging materials can be recycled via municipal recycling, where available. System bag is made from recycled plastic and can be recycled along with other thin plastics.
- 22 The Bluetooth wireless card version may vary depending on the operating system that is installed on your computer.